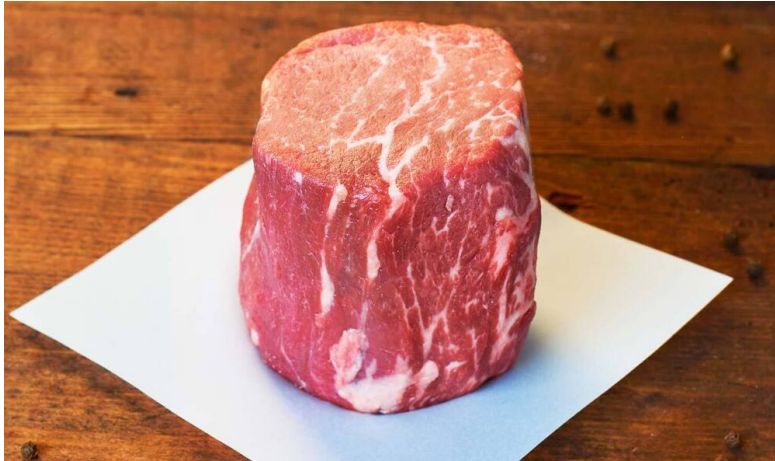




Meats By Linz

139308 - Beef Filet Center Cut Cln Choice 2

See package for details



\* Benefits

# Nutrition Facts

Servings per Container  
Serving size

Amount per serving  
**Calories**

	% Daily Value*
<b>Total Fat</b>	<b>%</b>
Saturated Fat	%
Trans Fat	
<b>Cholesterol</b>	<b>%</b>
<b>Sodium</b>	<b>%</b>
<b>Total Carbohydrate</b>	<b>%</b>
Dietary Fiber	%
Total Sugars	
Includes Added Sugar	%
<b>Protein</b>	
Vitamin D	%
Calcium	%
Iron	%
Potassium	%

\* The % Daily Value (DV) tells you how much a nutrient in a serving of food contributes to a daily diet. 2,000 calories a day is used for general nutrition advice.

### Ingredients

Beef

### ⚠ Allergens

**Free From:**

- crustaceans
- eggs
- fish
- milk
- peanuts
- soy
- tree nuts
- wheat

### Handling Suggestions

See label for suggestions

### Serving Suggestions

See label for suggestions

### Prep & Cooking Suggestions

See label for suggestions

### 📄 Product Specifications

Brand	Manufacturer	Product Category
Meats By Linz	Meats By Linz	

UPC	MFG #	SPC #	GTIN	Pack	Pack Desc.
	190303020012-006-14	139308	90887408089126		14/12 OZ

Gross Weight	Net Weight	Country of Origin	Kosher	Child Nutrition
11.35lb	10.5lb	United States	No	

Shipping Information						
Length	Width	Height	Volume	TlxHI	Shelf Life	Storage Temp From/To
16.25in	10.63in	4.25in	0.42ft3	9x11	21days	35°F / 37°F



Meats By Linz

139308 - Beef Filet Center Cut Cln Choice 2

See package for details



### Nutrition Analysis - By Measure

Calories		Total Fat		Sodium	
Protein		Trans Fats		Calcium	
Total Carbohydrates...		Saturated Fat		Iron	
Sugars		Added Sugars		Potassium	
Dietary Fiber		Polyunsaturated Fat		Zinc	
Lactose		Monounsaturated Fat		Phosphorus	
Sucrose		Cholesterol			
Vitamin A(U)		Vitamin D		Thiamin	
Vitamin A(RE)		Vitamin E		Niacin	
Vitamin C		Folate		Riboflavin	
Magnesium		Vitamin B-6		Vitamin B-12	
Monosodium		Sulphites		Nitrates	

### Additional Images

