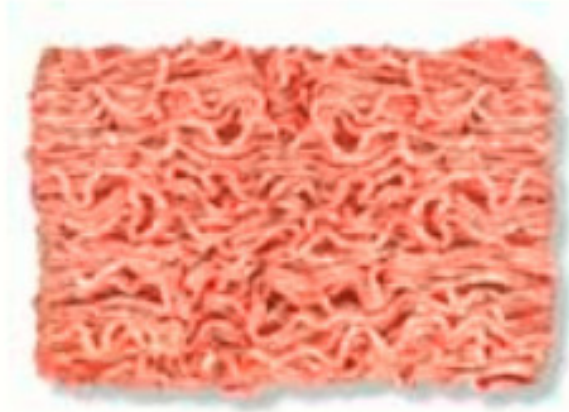




CATELLI

1609653 - Ground Veal Frozen

All natural formula fed ground veal from any portion of the carcass Ground into 80/20% lean content Individually vacuum sealed 5/2 lb. pkg. Namp code #396



Nutrition Facts

Servings per Container 8
Serving size 4.00Z (4oz)

Amount per serving
Calories 290

% Daily Value*

Total Fat 23g	35%
Saturated Fat 9g	45%
Trans Fat	
Cholesterol 80mg	27%
Sodium 75mg	3%
Total Carbohydrate 0g	0%
Dietary Fiber 0g	0%
Total Sugars 0g	
Includes 0g Added Sugar	0%
Protein 19g	
Vitamin D 0mcg	0%
Calcium 0mg	0%
Iron 0mg	0%
Potassium 0mg	0%

* The % Daily Value (DV) tells you how much a nutrient in a serving of food contributes to a daily diet. 2,000 calories a day is used for general nutrition advice.

* Benefits

All natural formula fed ground veal from any portion of the carcass Ground into 80/20% lean content Individually vacuum sealed 5/2 lb. pkg. Namp code #396 Group Housed and untethered, our milk-fed calves produce a product of superior flavor, color, texture and tenderness. Veal is not only delicious, but it is easy to prepare. Can be sauteed, stir-fried, braised, stewed, grilled, roasted or broiled making it a center of the plate favorite

Ingredients

veal

Allergens

Free From:



Handling Suggestions

keep refrigerated or frozen

Serving Suggestions

<https://catellibrothers.com/veal/recipes>

Prep & Cooking Suggestions

<https://catellibrothers.com/veal/cooking-veal>

Product Specifications

Brand	Manufacturer	Product Category
CATELLI	Catelli Brothers	Veal, Ground & Diced

UPC	MFG #	SPC #	GTIN	Pack	Pack Desc.
9070015904401	4401	1609653	90700159044018		5/2 LB

Gross Weight	Net Weight	Country of Origin	Kosher	Child Nutrition
10.85lb	10lb	United States	No	

Shipping Information						
Length	Width	Height	Volume	TlxHl	Shelf Life	Storage Temp From/To
13.5in	10.63in	4.5in	0.37ft3	10x10	365days	-2°F / -5°F



CATELLI

1609653 - Ground Veal Frozen

All natural formula fed ground veal from any portion of the carcass Ground into 80/20% lean content Individually vacuum sealed 5/2 lb. pkg. Namp code #396



Nutrition Analysis - By Measure

Calories	290	Total Fat	23g	Sodium	75mg
Protein	19	Trans Fats		Calcium	0mg
Total Carbohydrates...	0g	Saturated Fat	9g	Iron	0mg
Sugars	0g	Added Sugars	0g	Potassium	0mg
Dietary Fiber	0g	Polyunsaturated Fat		Zinc	
Lactose		Monounsaturated Fat		Phosphorus	
Sucrose		Cholesterol	80mg		
Vitamin A(U)		Vitamin D	0mcg	Thiamin	
Vitamin A(RE)		Vitamin E		Niacin	
Vitamin C		Folate		Riboflavin	
Magnesium		Vitamin B-6		Vitamin B-12	
Monosodium		Sulphites		Nitrates	

Additional Images

