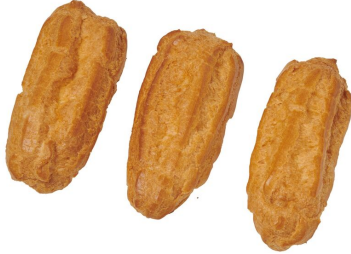




Rich's

# 87820 - clair Shell

Delectably light, large and fluffy unfilled clair shells bulk packed 72 shells/case  
1.02 oz unit weight. Fill shells with choice of Bavarian crme or whipped cream.



## \* Benefits

Delectably light, large and fluffy unfilled clair shells bulk packed (72 units/case) for easy operator use.

Handling recommendation: Keep frozen until ready to use. Fill shells with choice of Bavarian crme or whipped cream. Thaw, dip in melted chocolate or dust with powdered sugar, serve and enjoy!

Shelf life (Frozen/Refrigerated/Ambient): 270 / 3 / 0 days

# Nutrition Facts

Servings per Container **72**  
Serving size **1.02OZ**

Amount per serving  
**Calories 130**

% Daily Value\*

|                              |            |
|------------------------------|------------|
| <b>Total Fat</b> 9g          | <b>9%</b>  |
| Saturated Fat 4g             | <b>20%</b> |
| Trans Fat                    |            |
| <b>Cholesterol</b> 50mg      | <b>17%</b> |
| <b>Sodium</b> 130mg          | <b>6%</b>  |
| <b>Total Carbohydrate</b> 9g | <b>3%</b>  |
| Dietary Fiber 0g             | <b>0%</b>  |
| Total Sugars 0g              |            |
| Includes 0g Added Sugar      | <b>0%</b>  |
| <b>Protein</b> 4g            |            |
| Vitamin D 0mcg               | <b>0%</b>  |
| Calcium 10mg                 | <b>1%</b>  |
| Iron 0mg                     | <b>0%</b>  |
| Potassium 0mg                | <b>0%</b>  |

\* The % Daily Value (DV) tells you how much a nutrient in a serving of food contributes to a daily diet. 2,000 calories a day is used for general nutrition advice.

## Ingredients

INGREDIENTS FOR U.S. MARKET: WATER, LIQUID WHOLE EGGS, ENRICHED WHEAT FLOUR (FLOUR, ENZYME, NIACIN, REDUCED IRON, THIAMINE MONONITRATE, RIBOFLAVIN, FOLIC ACID), VEGETABLE SHORTENING (PALM OIL, SOYBEAN OIL), LIQUID EGG WHITES, SALT, AMONIUM BICARBONATE, LEAVENING (CORN STARCH, SODIUM BICARBONATE, SODIUM ALUMINUM SULPHATE, MONOCALCIUM PHOSPHATE).  
CONTAINS: EGGS, WHEAT. MANUFACTURED ON SHARED EQUIPMENTS THAT PROCESSES : MILK, TREE NUTS, SULFITES, SESAME SEEDS.

## ⚠ Allergens

### Contains:



### Free From:



## Handling Suggestions

Keep refrigerated, fill with desired choice of Bavarian creme or whipped cream.

## Serving Suggestions

Delectably light, large and fluffy unfilled clair shells bulk packed (72 units/case) for easy operator use.

Handling recommendation: Keep frozen until ready to use. Fill shells with choice of Bavarian crme or whipped cream. Thaw, dip in melted chocolate or dust with powdered sugar, serve and enjoy!

Shelf life (Frozen/Refrigerated/Ambient): 270 / 3 / 0 days

## Prep & Cooking Suggestions

1. CUT OFF TOP OF ECLAIR SHELL AND FILL WITH RICH'S WHIP TOPPING. REPLACE THE TOP AND ICE WITH FUDGE ICING. 2. IMPORTANT! WHEN SHELLS ARE FILLED WITH CREAM TYPE FILLINGS, ALWAYS DISPLAY FINISHED PRODUCT IN REFRIGERATED DISPLAY EQUIPMENT.

## 📄 Product Specifications

| Brand  | Manufacturer  | Product Category |
|--------|---------------|------------------|
| Rich's | Rich Products |                  |

| UPC | MFG #  | SPC # | GTIN             | Pack | Pack Desc. |
|-----|--------|-------|------------------|------|------------|
|     | #08782 | 87820 | 0000049800087828 |      | 72/1.02 OZ |

| Gross Weight | Net Weight | Country of Origin | Kosher | Child Nutrition |
|--------------|------------|-------------------|--------|-----------------|
| 6.59lb       | 4.59lb     | Canada            | Yes    |                 |

| Shipping Information |         |        |         |       |            |                      |
|----------------------|---------|--------|---------|-------|------------|----------------------|
| Length               | Width   | Height | Volume  | TlxHl | Shelf Life | Storage Temp From/To |
| 20in                 | 13.13in | 13in   | 1.98ft3 | 7x6   | 90days     | -2°F / -5°F          |



**Rich's**  
**87820 - clair Shell**

Delectably light, large and fluffy unfilled clair shells bulk packed 72 shells/case  
 1.02 oz unit weight. Fill shells with choice of Bavarian crme or whipped cream.



Nutrition Analysis - By Measure

|                        |     |                     |      |               |       |
|------------------------|-----|---------------------|------|---------------|-------|
| Calories               | 130 | Total Fat           | 9g   | Sodium        | 130mg |
| Protein                | 4   | Trans Fats          |      | Calcium       | 10mg  |
| Total Carbohydrates... | 9g  | Saturated Fat       | 4g   | Iron          | 0mg   |
| Sugars                 | 0g  | Added Sugars        | 0g   | Potassium     | 0mg   |
| Dietary Fiber          | 0g  | Polyunsaturated Fat |      | Zinc          |       |
| Lactose                |     | Monounsaturated Fat |      | Phosphorus    |       |
| Sucrose                |     | Cholesterol         | 50mg |               |       |
| Vitamin A(U)           |     | Vitamin D           | 0mcg | Thiamin       |       |
| Vitamin A(RE)          |     | Vitamin E           |      | Niacin        |       |
| Vitamin C              |     | Folate              |      | Riboflavin    |       |
| Magnesium              |     | Vitamin B-6         |      | Vitamin B-1 2 |       |
| Monosodium             |     | Sulphites           |      | Nitrates      |       |

Additional Images

