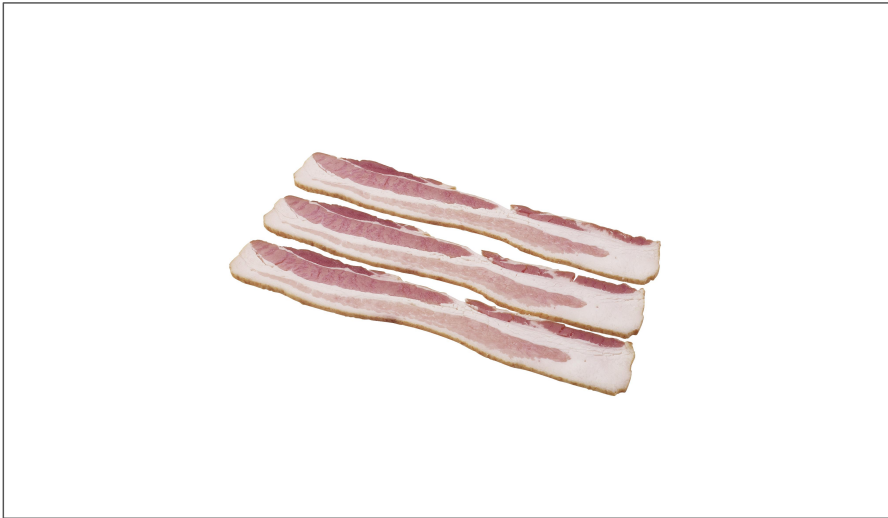




Hormel Meat

210078 - Bacon 13 17 Pecanwood Smkd Fresh S/O



Nutrition Facts

Serving Size: 23 g

Number of Servings per 0

Amount Per Serving

Calories: 130

Calories from Fat: 90 KCAL

% Daily Value*

Total Fat 10 g 15%

Saturated Fat 4 g 20%

Trans Fat 0 g

Cholesterol 25 mg 8%

Sodium 550 mg 23%

Total Carbohydrate 1 g 0%

Dietary Fiber 0 g 0%

Sugars 1 g %

Protein 8 g %

Vitamin A	Per Srv	0%	Vitamin C	Per Srv	0%
------------------	---------	----	------------------	---------	----

Calcium	0%	Iron	0%
----------------	----	-------------	----

*Percent Daily Values are based on a 2,000 calorie diet. Your daily values may be higher or lower depending on your calorie

	Calories	2,000	2,500
Total Fat	Less than		
Sat. Fat	Less than		
Cholesterol	Less than		
Sodium	Less than		
Total Carbohydrate			
Dietary Fiber			
Calories per gram			
Fat	Carbohydrate		Protein

Benefits

OLD SMOKEHOUSE Pecanwood Bacon delivers improved cook yield, superior flavor, and excellent plate coverage. The fresh pack packaging ensures out of the smokehouse flavor eliminating flavor loss.

Ingredients

Cured with Water, Salt, Sugar, Sodium Phosphate, Natural Flavor (Water, Natural Flavors), Sodium Erythorbate, Sodium Nitrite.

Allergens

Free From:

- shellfish
- eggs
- fish
- dairy
- peanuts
- sesame
- soy
- tree nuts
- wheat

Handling Suggestions

RECOMMENDED TEMPERATURE: 34F. MINIMUM TEMPERATURE: 32F. MAXIMUM TEMPERATURE: 40F. STORAGE: KEEP REFRIGERATED.

Serving Suggestions

Use as center of the plate for breakfast or as flavorful addition to sandwiches, salads, potatoes, soups, and entrees. Can also be used to wrap steaks, chops, shrimp, and scallops.

Prep & Cooking Suggestions

OLD SMOKEHOUSE Pecanwood Bacon can be prepared in the oven or on the grill. *GRILL: 375 degrees for 3-4 minutes on each side.*CONVECTION OVEN: 350 degrees for 10-15 minutes.

Product Specifications

Brand	Manufacturer	Product Category
HORMEL	Hormel Meat	Bacon Slab & Sliced

MFG #	SPC #	GTIN	Pack	Pack Desc.
48527	210078	00037600485272		2/10#

Gross Weight	Net Weight	Country of Origin	Kosher	Child Nutrition
20 lbs	19 lbs	US		

Shipping Information						
Length	Width	Height	Volume	TlxHl	Shelf Life	Storage Temp From/To
16.9 in	10.9 in	7 in	0.75 cf	5x5	0 days	33°f / 39°f



☰ Nutrition Analysis

Calories	130 KCAL	Total Fat	10 g	Sodium	550 mg
Protein	8 g	Trans Fats	0 g	Calcium	
Total Carbohydrates...	1 g	Saturated Fat	4 g	Iron	
Sugars	1 g	Polyunsaturated Fat		Potassium	
Dietary Fiber		Monounsaturated Fat		Zinc	
Lactose		Cholesterol	25 mg	Phosphorus	
Sucrose					
Vitamin A(IU)		Vitamin D		Thiamin	
Vitamin A(RE)		Vitamin E		Niacin	
Vitamin C		Folate		Riboflavin	
Magnesium		Vitamin B-6		Vitamin B-12	
Monosodium		Sulphites		Nitrates	

📷 Additional Images

