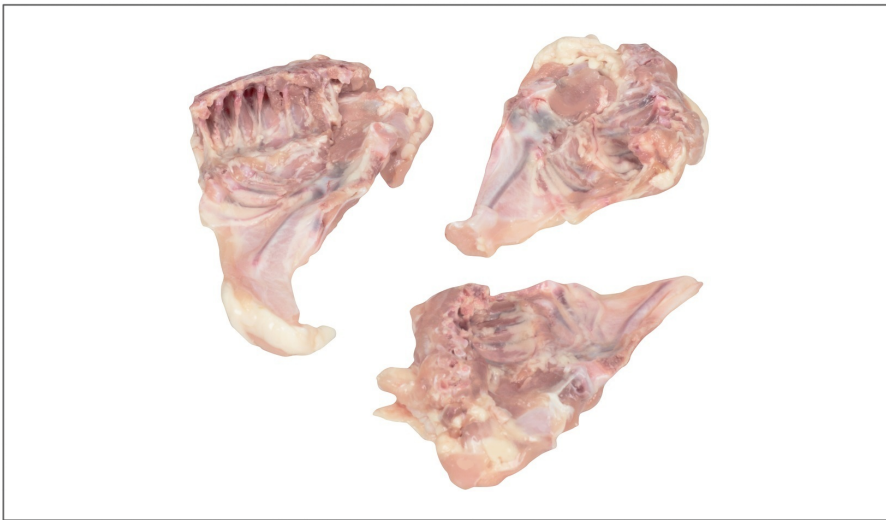




PACKER

211419 - Chicken Frame Bone Raw

INGREDIENT CHICKEN, USE TO MAKE SOUP'S GRAVY, FLAVOR BASES, ETC.



* Benefits

Nutrition Facts

Servings per Container **8**
Serving size **VARIED (114g)**

Amount per serving
Calories 160

	% Daily Value*
Total Fat 9g	14%
Saturated Fat 2.5g	13%
Trans Fat 0g	
Cholesterol 95mg	32%
Sodium 65mg	3%
Total Carbohydrate 0g	0%
Dietary Fiber 0g	0%
Total Sugars 0g	
Includes Added Sugar	%
Protein 20g	
Vitamin D	%
Calcium 0mg	0%
Iron 0.01mg	0%
Potassium	%

* The % Daily Value (DV) tells you how much a nutrient in a serving of food contributes to a daily diet. 2,000 calories a day is used for general nutrition advice.

Ingredients

FRYING CHICKEN FRONT HALF FRAMES
CONTAINS UP TO 7% RETAINED WATER

⚠ Allergens

Handling Suggestions

Store Frozen 10 degrees or below

Serving Suggestions

INGREDIENT CHICKEN PREPARE AND SERVE ACCORDING TO RECIPE OR AS REQUIRED BY APPLICATION

Prep & Cooking Suggestions

INGREDIENT CHICKEN PREPARE AND SERVE ACCORDING TO RECIPE OR AS REQUIRED BY APPLICATION

📄 Product Specifications

Brand	Manufacturer	Product Category
PACKER	KOCH FOODS	Chicken Whole Bird

MFG #	SPC #	GTIN	Pack	Pack Desc.
7301	211419	00045421073011	1	1/30#

Gross Weight	Net Weight	Country of Origin	Kosher	Child Nutrition
32lb	30lb	USA		No

Shipping Information						
Length	Width	Height	Volume	TlxHI	Shelf Life	Storage Temp From/To
21.63in	13.63in	8.5in	1.45ft3	7x2	0DAYS	0°F / 32°F



PACKER

211419 - Chicken Frame Bone Raw

INGREDIENT CHICKEN, USE TO MAKE SOUP'S GRAVY, FLAVOR BASES, ETC.



Nutrition Analysis - By Serving

Calories	160	Total Fat	9g	Sodium	65mg
Protein	20	Trans Fats	0g	Calcium	0mg
Total Carbohydrates...	0g	Saturated Fat	2.5g	Iron	0.01mg
Sugars	0g	Added Sugars		Potassium	
Dietary Fiber	0g	Polyunsaturated Fat		Zinc	
Lactose		Monounsaturated Fat		Phosphorus	
Sucrose		Cholesterol	95mg		
Vitamin A(IU)	0	Vitamin D		Thiamin	
Vitamin A(RE)		Vitamin E		Niacin	
Vitamin C	0mg	Folate		Riboflavin	
Magnesium		Vitamin B-6		Vitamin B-12	
Monosodium		Sulphites		Nitrates	

Additional Images

