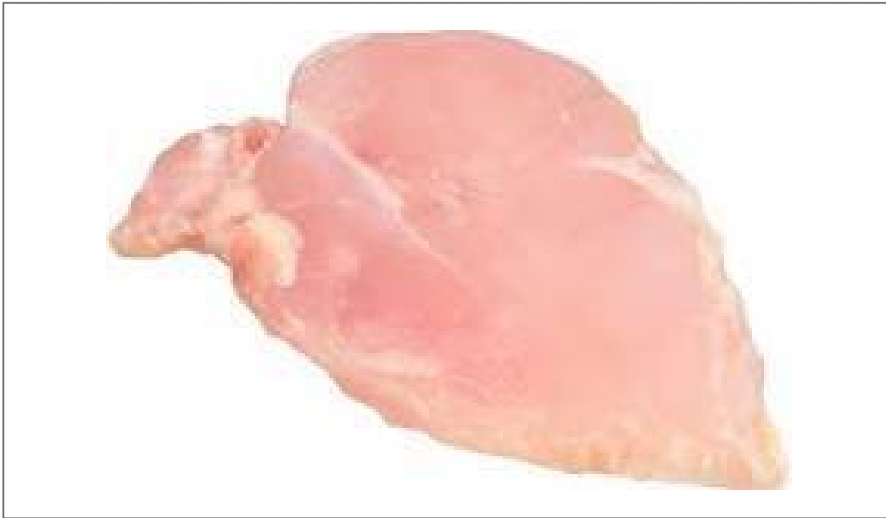




WALKER FARMS

211953 - Chicken Breast Flat Bnls/Skls If 6 Oz



Nutrition Facts

Servings per Container
Serving size

Amount per serving
Calories

	% Daily Value*
Total Fat	%
Saturated Fat	%
Trans Fat	
Cholesterol	%
Sodium	%
Total Carbohydrate	%
Dietary Fiber	%
Total Sugars	
Includes Added Sugar	%
Protein	
Vitamin D	%
Calcium	%
Iron	%
Potassium	%

* The % Daily Value (DV) tells you how much a nutrient in a serving of food contributes to a daily diet. 2,000 calories a day is used for general nutrition advice.

* Benefits

Ingredients

⚠ Allergens

Handling Suggestions

📄 Product Specifications

Serving Suggestions

Prep & Cooking Suggestions

Brand	Manufacturer	Product Category
WALKER FARMS	TEXAS FOOD BRANDS LLC	Oysters, Commodity

MFG #	SPC #	GTIN	Pack	Pack Desc.
41206	211953	111111111111		4/5#

Gross Weight	Net Weight	Country of Origin	Kosher	Child Nutrition
22lb	20lb			

Shipping Information						
Length	Width	Height	Volume	TlxHl	Shelf Life	Storage Temp From/To
8in	11in	15in	0.76cf	6x7	365days	0 / 32



WALKER FARMS

211953 - Chicken Breast Flat Bnls/Skls If 6 Oz



Nutrition Analysis

Calories		Total Fat		Sodium	
Protein		Trans Fats		Calcium	
Total Carbohydrates...		Saturated Fat		Iron	
Sugars		Added Sugars		Potassium	
Dietary Fiber		Polyunsaturated Fat		Zinc	
Lactose		Monounsaturated Fat		Phosphorus	
Sucrose		Cholesterol			
Vitamin A(U)		Vitamin D		Thiamin	
Vitamin A(RE)		Vitamin E		Niacin	
Vitamin C		Folate		Riboflavin	
Magnesium		Vitamin B-6		Vitamin B-12	
Monosodium		Sulphites		Nitrates	

Additional Images

