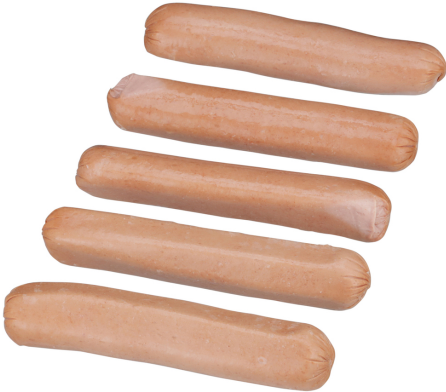




FARMLAND

215228 - Hot Dog Beef Gold Medal 4 1

All Smithfield brands are driven by the love of meat, ours, yours and, of course, your customers. That's why our offerings are so vast; because we all need our pork and specialty prepared meats our way, no one offers more. Smithfield Culinary offers everything you need to build your menu, from innovative culinary insights and ideas that help create head turning menu ideas. Smithfield has set sustainability goals because we believe we can build a more sustainable business and contribute to a better future.



\* Benefits

Our hot dogs come in a whole range of sizes, ranging from appetizer to dinner franks. No MSG, our franks are free from MSG, which means no artificial aftertaste for your guests, giving them a clean, crisp bite they're sure to love.

Ingredients

Beef, Water, Flavorings, Contains 2% or Less of Salt, Sorbitol, Potassium Lactate, Sodium Phosphates, Sodium Diacetate, Sodium Erythorbate, Sodium Nitrite, Extractives Of Paprika.

⚠ Allergens

Free From:

- crustaceans
- eggs
- fish
- milk
- peanuts
- sesame
- soy
- tree nuts
- wheat

Nutrition Facts

Servings per Container 40  
Serving size 1HotDog (112g)

Amount per serving  
Calories 340

	% Daily Value*
Total Fat 31g	48%
Saturated Fat 12g	60%
Trans Fat 2g	
Cholesterol 55mg	18%
Sodium 1040mg	45%
Total Carbohydrate 4g	1%
Dietary Fiber 1g	4%
Total Sugars 0g	
Includes 0g Added Sugar	0%
Protein 12g	
Vitamin D 5.48mcg	27%
Calcium 28.93mg	2%
Iron 1.89mg	11%
Potassium 630mg	13%

\* The % Daily Value (DV) tells you how much a nutrient in a serving of food contributes to a daily diet. 2,000 calories a day is used for general nutrition advice.

Handling Suggestions

Store and use per package instructions

Serving Suggestions

The perfect hotdog for operators utilizing traditional toppings like chili & cheese or even think global by adding spicy mustard and kimchi.

Prep & Cooking Suggestions

Cooking times are based on product at refrigerator temperature. Heat hot dogs to internal temperature of 160F. After reaching 160F, product can be held at 140F for maximum of 2 hours. Roller Grill: Cook hot dogs on medium-high for 35 to 45 minutes. Convection Steamer: Cook hot dogs for 5 to 10 minutes. Steam Table Water Bath: Cook hot dogs with water temperature at 180F. for 10 to 15 minutes.

✏ Product Specifications

Brand	Manufacturer
FARMLAND	SMITHFIELD/FARMLAND

MFG #	SPC #	GTIN	Pack	Pack Desc.
81095	215228	00070247810953	2	1/10#

Gross Weight	Net Weight	Country of Origin	Kosher	Child Nutrition
11lb	10lb	USA		No

Shipping Information						
Length	Width	Height	Volume	TlxHl	Shelf Life	Storage Temp From/To
12in	7.3in	6.4in	0.32ft3	22x7	0DAYS	0°F / 32°F



FARMLAND

215228 - Hot Dog Beef Gold Medal 4 1

All Smithfield brands are driven by the love of meat, ours, yours and, of course, your customers. That's why our offerings are so vast; because we all need our pork and specialty prepared meats our way, no one offers more. Smithfield Culinary offers everything you need to build your menu, from innovative culinary insights and ideas that help create head turning menu ideas. Smithfield has set sustainability goals because we believe we can build a more sustainable business and contribute to a better future.



Nutrition Analysis - By Serving

Calories	340	Total Fat	31g	Sodium	1040mg
Protein	12	Trans Fats	2g	Calcium	28.93mg
Total Carbohydrates...	4g	Saturated Fat	12g	Iron	1.89mg
Sugars	0g	Added Sugars	0g	Potassium	630mg
Dietary Fiber	1g	Polyunsaturated Fat	1g	Zinc	0
Lactose		Monounsaturated Fat	13g	Phosphorus	
Sucrose		Cholesterol	55mg		
Vitamin A(IU)•	0	Vitamin D	5.48mcg	Thiamin	
Vitamin A(RE)		Vitamin E		Niacin	
Vitamin C	0mg	Folate	0mg	Riboflavin	0mg
Magnesium		Vitamin B-6		Vitamin B-1 2•	
Monosodium		Sulphites		Nitrates	

Additional Images

