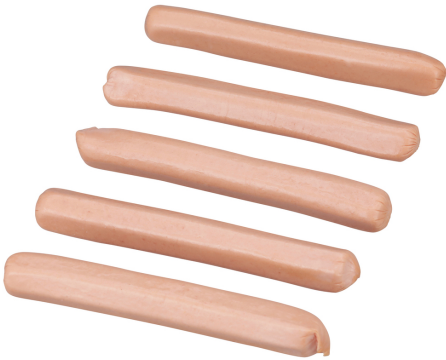




FARMLAND

215294 - Hot Dog All Beef 10 1 Cn

All Smithfield brands are driven by the love of meat, ours, yours and, of course, your customers. That's why our offerings are so vast; because we all need our pork and specialty prepared meats our way, no one offers more. Smithfield Culinary offers everything you need to build your menu, from innovative culinary insights and ideas that help create head turning menu ideas. Smithfield has set sustainability goals because we believe we can build a more sustainable business and contribute to a better future.



* Benefits

Our hot dogs come in a whole range of sizes, ranging from appetizer to dinner franks. No MSG Our franks are free from MSG, which means no artificial aftertaste for your guests, giving them a clean, crisp bite they're sure to love.

Ingredients

Beef, Water, Flavorings, Contains 2% or Less of Salt, Sorbitol, Potassium Lactate, Sodium Phosphates, Sodium Diacetate, Sodium Erythorbate, Sodium Nitrite, Extractives Of Paprika.

⚠ Allergens

Free From:

- crustaceans
- eggs
- fish
- milk
- peanuts
- sesame
- soy
- tree nuts
- wheat

Nutrition Facts

Servings per Container 100
Serving size 1Frank (45g)

Amount per serving
Calories 140

	% Daily Value*
Total Fat 13g	20%
Saturated Fat 5g	25%
Trans Fat 1g	
Cholesterol 20mg	7%
Sodium 420mg	18%
Total Carbohydrate 2g	1%
Dietary Fiber 0g	0%
Total Sugars 0g	
Includes 0g Added Sugar	0%
Protein 5g	
Vitamin D 2.2mcg	11%
Calcium 11.62mg	1%
Iron 0.76mg	4%
Potassium 250mg	5%

* The % Daily Value (DV) tells you how much a nutrient in a serving of food contributes to a daily diet. 2,000 calories a day is used for general nutrition advice.

Handling Suggestions

Store and use per package instructions

Serving Suggestions

The perfect hotdog for operators utilizing traditional toppings like chili & cheese or even think global by adding spicy mustard and kimchi.

Prep & Cooking Suggestions

Cooking times are based on product at refrigerator temperature. Heat hot dogs to internal temperature of 160F. After reaching 160F, product can be held at 140F for maximum of 2 hours. Roller Grill: Cook hot dogs on medium-high for 35 to 45 minutes. Convection Steamer: Cook hot dogs for 5 to 10 minutes. Steam Table Water Bath: Cook hot dogs with water temperature at 180F. for 10 to 15 minutes.

📄 Product Specifications

Brand	Manufacturer
FARMLAND	SMITHFIELD FOODS INC.

MFG #	SPC #	GTIN	Pack	Pack Desc.
00070247810977	215294	00070247810977	2	2 / 5.02 LBR

Gross Weight	Net Weight	Country of Origin	Kosher	Child Nutrition
10.4lb	10lb	USA		No

Shipping Information						
Length	Width	Height	Volume	TlxHI	Shelf Life	Storage Temp From/To
10.63in	7.63in	6.44in	0.31ft3	22x9	365DAYS	-10°F / 0°F



FARMLAND

215294 - Hot Dog All Beef 10 1 Cn

All Smithfield brands are driven by the love of meat, ours, yours and, of course, your customers. That's why our offerings are so vast; because we all need our pork and specialty prepared meats our way, no one offers more. Smithfield Culinary offers everything you need to build your menu, from innovative culinary insights and ideas that help create head turning menu ideas. Smithfield has set sustainability goals because we believe we can build a more sustainable business and contribute to a better future.



Nutrition Analysis - By Serving

Calories	140	Total Fat	13g	Sodium	420mg
Protein	5	Trans Fats	1g	Calcium	11.62mg
Total Carbohydrates...	2g	Saturated Fat	5g	Iron	0.76mg
Sugars	0g	Added Sugars	0g	Potassium	250mg
Dietary Fiber	0g	Polyunsaturated Fat	0g	Zinc	0
Lactose		Monounsaturated Fat	5g	Phosphorus	
Sucrose		Cholesterol	20mg		
Vitamin A(IU)•	0	Vitamin D	2.2mcg	Thiamin	
Vitamin A(RE)		Vitamin E		Niacin	
Vitamin C	0mg	Folate	0mg	Riboflavin	0mg
Magnesium		Vitamin B-6		Vitamin B-12•	
Monosodium		Sulphites		Nitrates	

Additional Images

