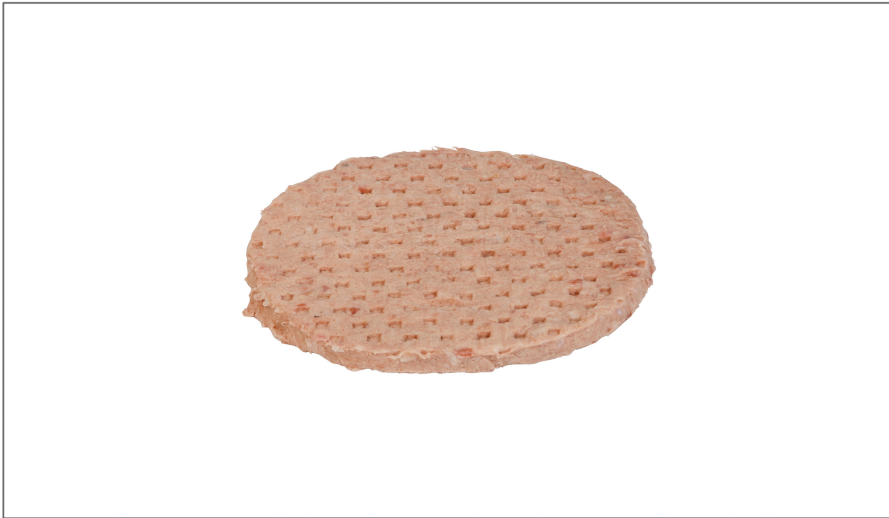




HOLTEN

# 216557 - Beef Patty Seasoned Round 75/25

Lightly preseasoned to enhance their natural beef flavor and for uniform taste throughout. Great tasting and juicy from first bite to last. Made with high quality ingredients. Clean label, few ingredients. Contains no MSG, or TVP, soy, or other fillers! Gluten free! Individually Quick Frozen for ease of handling, product safety, and product freshness. Easy to cook goes straight from freezer to grill. Performs well under multiple cooking methods. Exact portioning controls costs. Processed under HACCP procedures and USDA regulations to ensure food safety. SQF Food Safety and Quality Codes Certified!



### \* Benefits

Round 3.2 oz pattie, measures 5 x 4.5 x .25

## Nutrition Facts

Servings per Container	1
Serving size	100g
<b>Amount per serving</b>	
<b>Calories</b>	<b>270</b>
% Daily Value*	
<b>Total Fat</b> 23.59g	<b>36%</b>
Saturated Fat 9.25g	<b>46%</b>
Trans Fat 1.09g	
<b>Cholesterol</b> 69.58mg	<b>23%</b>
<b>Sodium</b> 205.93mg	<b>9%</b>
<b>Total Carbohydrate</b> 0g	<b>0%</b>
Dietary Fiber 0g	<b>0%</b>
Total Sugars 0g	
Includes 0g Added Sugar	<b>0%</b>
<b>Protein</b> 14.61g	
Vitamin D 0mcg	<b>0%</b>
Calcium 20.16mg	<b>2%</b>
Iron 1.6mg	<b>9%</b>
Potassium 0mg	<b>0%</b>

\* The % Daily Value (DV) tells you how much a nutrient in a serving of food contributes to a daily diet. 2,000 calories a day is used for general nutrition advice.

### Ingredients

Ingredients: Beef, water, spice, salt

### Allergens

#### Free From:

- crustaceans
- mollusks
- eggs
- fish
- milk
- peanuts
- sesame
- soy
- tree nuts
- wheat

### Handling Suggestions

Product should be stored between -10 and 10 degrees F

### Serving Suggestions

On a bun in a basket with curly fries for a quick lunch entree. On a bun with sides of coleslaw, French fries, and a pickle for lunch or supper. Without a bun on a plate with salad and fruit, or wrapped in a tortilla or lettuce, for a lighter entree. Layered for cheeseburgers. On a toasted onion roll topped with BBQ sauce, bacon, and onions. Topped with a slice of cheddar cheese and sauted portabella mushrooms. Topped with bacon strips and a melted slice of American cheese. Topped with melted slices of American cheese, Swiss cheese, and cheddar cheese. Topped with a slice of Swiss cheese and sauted mushrooms & onions.

### Prep & Cooking Suggestions

Cook patties from frozen state for best results. Grill: Place on a preheated (350F) grill and cook until juices begin to pool. Turn patty and continue cooking until juices run clear. Always cook ground beef products to an internal temperature of 160F.

### Product Specifications

Brand	Manufacturer	Product Category
HOLTEN	BRANDING IRON/HOLTEN	Beef

MFG #	SPC #	GTIN	Pack	Pack Desc.
32559	216557	00079821325593	100	100/3.2 OZ

Gross Weight	Net Weight	Country of Origin	Kosher	Child Nutrition
20.82lb	20lb	USA		No

Shipping Information						
Length	Width	Height	Volume	TlxHl	Shelf Life	Storage Temp From/To
15.3in	10.5in	8.8in	0.82ft3	10x3	0DAYS	0°F / 32°F



**HOLTEN**

# 216557 - Beef Patty Seasoned Round 75/25

Lightly preseasoned to enhance their natural beef flavor and for uniform taste throughout. Great tasting and juicy from first bite to last. Made with high quality ingredients. Clean label, few ingredients. Contains no MSG, or TVP, soy, or other fillers! Gluten free! Individually Quick Frozen for ease of handling, product safety, and product freshness. Easy to cook goes straight from freezer to grill. Performs well under multiple cooking methods. Exact portioning controls costs. Processed under HACCP procedures and USDA regulations to ensure food safety. SQF Food Safety and Quality Codes Certified!



## Nutrition Analysis - By Serving

Calories	270	Total Fat	23.59g	Sodium	205.93mg
Protein	14.61	Trans Fats	1.09g	Calcium	20.16mg
Total Carbohydrates...	0g	Saturated Fat	9.25g	Iron	1.6mg
Sugars	0g	Added Sugars	0g	Potassium	0mg
Dietary Fiber	0g	Polyunsaturated Fat		Zinc	
Lactose		Monounsaturated Fat		Phosphorus	
Sucrose		Cholesterol	69.58mg		
Vitamin A(IU)	143.37	Vitamin D	0mcg	Thiamin	
Vitamin A(RE)		Vitamin E		Niacin	
Vitamin C	0mg	Folate		Riboflavin	
Magnesium		Vitamin B-6		Vitamin B-12	
Monosodium		Sulphites		Nitrates	

## Additional Images

