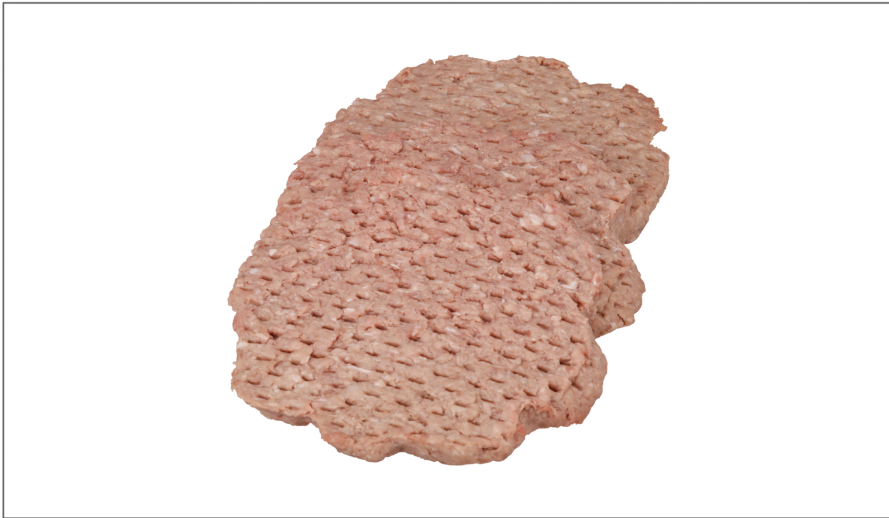




FARMLAND

# 217034 - Beef Angus Patty Ground S/O

All Smithfield brands are driven by the love of meat ours, yours and, of course, your customers. That's why our offerings are so vast; because we all need our pork and specialty prepared meats our way no one offers more. Smithfield Culinary offers everything you need to build your menu, from innovative culinary insights and ideas that help create head-turning menu ideas. Equally important - Smithfield has set sustainability goals because we believe we can build a more sustainable business and contribute to a better future.



### \* Benefits

For a rich flavor and exceptional quality, look no farther than Black Angus Beef Patties. We grind 100% Black Angus Beef through a 1/8-inch grind before crafting our patties.

### Ingredients

### ⚠ Allergens

#### Free From:

- crustaceans
- eggs
- fish
- milk
- peanuts
- sesame
- soy
- tree nuts
- wheat

## Nutrition Facts

Servings per Container  
Serving size **1patty (100g)**

Amount per serving  
**Calories 270**

	% Daily Value*
<b>Total Fat</b> 22g	<b>34%</b>
Saturated Fat 9g	<b>45%</b>
Trans Fat 2g	
<b>Cholesterol</b> 70mg	<b>23%</b>
<b>Sodium</b> 5mg	<b>0%</b>
<b>Total Carbohydrate</b> 0g	<b>0%</b>
Dietary Fiber 0g	<b>0%</b>
Total Sugars 0g	
Includes Added Sugar	<b>%</b>
<b>Protein</b> 18g	
Vitamin D 0mcg	<b>0%</b>
Calcium 0mg	<b>0%</b>
Iron 0mg	<b>0%</b>
Potassium	<b>%</b>

\* The % Daily Value (DV) tells you how much a nutrient in a serving of food contributes to a daily diet. 2,000 calories a day is used for general nutrition advice.

### Handling Suggestions

Keep Frozen Until Use.

### Serving Suggestions

Serve as hamburgers, Salisbury steak or beef patty melt.

### Prep & Cooking Suggestions

Cook Raw Patties from frozen: 4oz.-5.33 oz.-6.0oz.-8.0oz. Flat Top Grill/Charbroiler/Convection Oven set at 350.F. Cook 10 to 15 minutes.

### ✍ Product Specifications

Brand	Manufacturer	Product Category
FARMLAND	SMITHFIELD/FARMLAND	Freezer, Deli & Plastic Food Storage Bags

MFG #	SPC #	GTIN	Pack	Pack Desc.
40141	217034	00070247401410	1	30/5.3 OZ

Gross Weight	Net Weight	Country of Origin	Kosher	Child Nutrition
11.1lb	10lb	USA		No

Shipping Information						
Length	Width	Height	Volume	TlxHI	Shelf Life	Storage Temp From/To
15.7in	10.4in	4.9in	0.46ft3	10x10	0DAYS	0°F / 32°F



FARMLAND

# 217034 - Beef Angus Patty Ground S/O

All Smithfield brands are driven by the love of meat ours, yours and, of course, your customers. That's why our offerings are so vast; because we all need our pork and specialty prepared meats our way no one offers more. Smithfield Culinary offers everything you need to build your menu, from innovative culinary insights and ideas that help create head-turning menu ideas. Equally important - Smithfield has set sustainability goals because we believe we can build a more sustainable business and contribute to a better future.



## Nutrition Analysis - By Serving

Calories	270	Total Fat	22g	Sodium	5mg
Protein	18	Trans Fats	2g	Calcium	0mg
Total Carbohydrates...	0g	Saturated Fat	9g	Iron	0mg
Sugars	0g	Added Sugars		Potassium	
Dietary Fiber	0g	Polyunsaturated Fat		Zinc	
Lactose		Monounsaturated Fat		Phosphorus	
Sucrose		Cholesterol	70mg		
Vitamin A(IU)	0	Vitamin D	0mcg	Thiamin	
Vitamin A(RE)		Vitamin E		Niacin	
Vitamin C	0mg	Folate		Riboflavin	
Magnesium		Vitamin B-6		Vitamin B-12	
Monosodium		Sulphites		Nitrates	

## Additional Images

