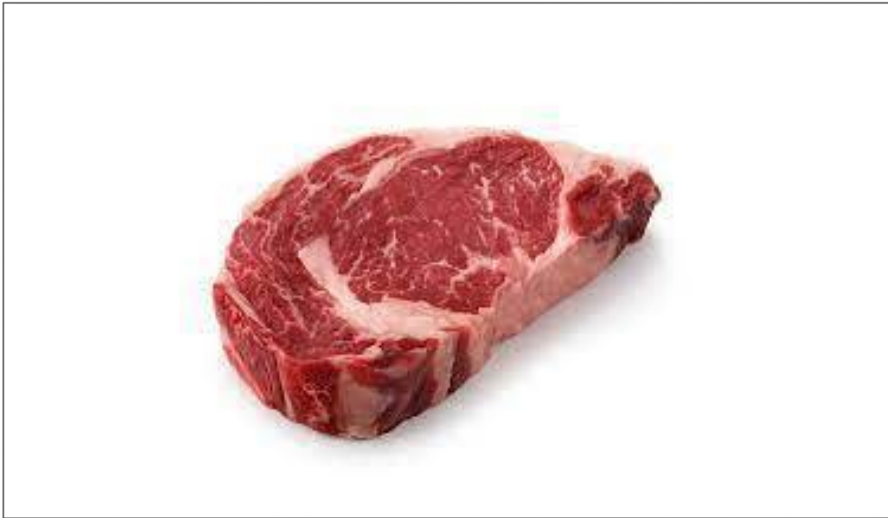




MILL STREET

217210 - Beef Steak Ribeye Signature Angus Jit



\* Benefits

# Nutrition Facts

Servings per Container  
Serving size

Amount per serving  
**Calories**

	% Daily Value*
<b>Total Fat</b>	<b>%</b>
Saturated Fat	%
Trans Fat	
<b>Cholesterol</b>	<b>%</b>
<b>Sodium</b>	<b>%</b>
<b>Total Carbohydrate</b>	<b>%</b>
Dietary Fiber	%
Total Sugars	
Includes Added Sugar	%
<b>Protein</b>	
Vitamin D	%
Calcium	%
Iron	%
Potassium	%

\* The % Daily Value (DV) tells you how much a nutrient in a serving of food contributes to a daily diet. 2,000 calories a day is used for general nutrition advice.

Ingredients

⚠ Allergens

Handling Suggestions

📄 Product Specifications

Brand	Manufacturer
MILL STREET	KFS

Serving Suggestions

MFG #	SPC #	GTIN	Pack	Pack Desc.
2211210	217210	1111111111111		16/10 OZ

Prep & Cooking Suggestions

Gross Weight	Net Weight	Country of Origin	Kosher	Child Nutrition
10.5lb	10lb		No	No

Shipping Information						
Length	Width	Height	Volume	TlxHl	Shelf Life	Storage Temp From/To
16in	10.13in	4in	0.38cf	5x5	28days	33 / 39



MILL STREET

217210 - Beef Steak Ribeye Signature Angus Jit



### Nutrition Analysis

Calories		Total Fat		Sodium	
Protein		Trans Fats		Calcium	
Total Carbohydrates...		Saturated Fat		Iron	
Sugars		Added Sugars		Potassium	
Dietary Fiber		Polyunsaturated Fat		Zinc	
Lactose		Monounsaturated Fat		Phosphorus	
Sucrose		Cholesterol			
Vitamin A(U)		Vitamin D		Thiamin	
Vitamin A(RE)		Vitamin E		Niacin	
Vitamin C		Folate		Riboflavin	
Magnesium		Vitamin B-6		Vitamin B-12	
Monosodium		Sulphites		Nitrates	

### Additional Images

