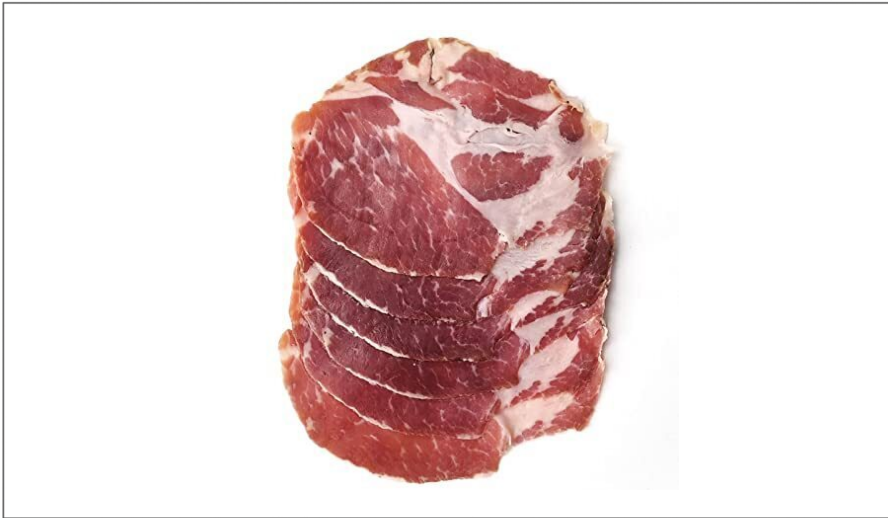




MARGHERITA

# 220142 - Ham Capicola Sweet

Carando Capicola is available in two varieties, Hot and Sweet. Hot Capicola is finished with fresh red pepper and a special spice blend. Sweet Capicola is rolled in black pepper for a savory finish. Both are available in Superiore and Classic formats. Superiore is made with a natural casing for an authentic, artisanal appearance. Classics artificial casing guarantees a consistent appearance.



## Nutrition Facts

Servings per Container  
Serving size **2oz (56g)**

Amount per serving  
**Calories 110**

	% Daily Value*
<b>Total Fat</b> 7g	<b>11%</b>
Saturated Fat 2.5g	<b>13%</b>
Trans Fat 0g	
<b>Cholesterol</b> 35mg	<b>12%</b>
<b>Sodium</b> 910mg	<b>40%</b>
<b>Total Carbohydrate</b> 2g	<b>1%</b>
Dietary Fiber 0g	<b>0%</b>
Total Sugars 1g	
Includes 1g Added Sugar	<b>2%</b>
<b>Protein</b> 10g	
<b>Vitamin D</b> 36.1mcg	<b>181%</b>
<b>Calcium</b> 8.98mg	<b>1%</b>
<b>Iron</b> 0.64mg	<b>4%</b>
<b>Potassium</b> 180mg	<b>4%</b>

\* The % Daily Value (DV) tells you how much a nutrient in a serving of food contributes to a daily diet. 2,000 calories a day is used for general nutrition advice.

### \* Benefits

Coated With Spices, Salt, Paprika

### Ingredients

### ⚠ Allergens

#### Free From:

- crustaceans
- eggs
- fish
- milk
- peanuts
- sesame
- soy
- tree nuts
- wheat

### Handling Suggestions

Store and use per package instruction.

### Serving Suggestions

Serve as desired

### Prep & Cooking Suggestions

Prepare per package instructions

### 📄 Product Specifications

Brand	Manufacturer	Product Category
MARGHERITA	SMITHFIELD/FARMLAND	Pork

MFG #	SPC #	GTIN	Pack	Pack Desc.
10180	220142	90076033101802	2	2/5.75#AV

Gross Weight	Net Weight	Country of Origin	Kosher	Child Nutrition
12.23lb	11.5lb	USA		No

Shipping Information						
Length	Width	Height	Volume	TlxHl	Shelf Life	Storage Temp From/To
14in	8.88in	5in	0.36ft3	13x8	90DAYS	33°F / 39°F



**MARGHERITA**

## 220142 - Ham Capicola Sweet

Carando Capicola is available in two varieties, Hot and Sweet. Hot Capicola is finished with fresh red pepper and a special spice blend. Sweet Capicola is rolled in black pepper for a savory finish. Both are available in Superiore and Classic formats. Superiore is made with a natural casing for an authentic, artisanal appearance. Classics artificial casing guarantees a consistent appearance.



### Nutrition Analysis - By Serving

Calories	110	Total Fat	7g	Sodium	910mg
Protein	10	Trans Fats	0g	Calcium	8.98mg
Total Carbohydrates...	2g	Saturated Fat	2.5g	Iron	0.64mg
Sugars	1g	Added Sugars	1g	Potassium	180mg
Dietary Fiber	0g	Polyunsaturated Fat	1g	Zinc	
Lactose		Monounsaturated Fat	3g	Phosphorus	
Sucrose		Cholesterol	35mg		
Vitamin A(U)	4.86	Vitamin D	36.1mcg	Thiamin	
Vitamin A(RE)		Vitamin E		Niacin	
Vitamin C	0mg	Folate		Riboflavin	
Magnesium		Vitamin B-6		Vitamin B-12	
Monosodium		Sulphites		Nitrates	

### Additional Images

