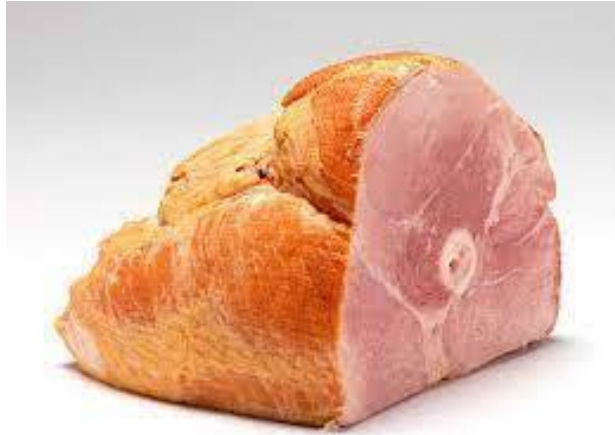




SEABOARD FARMS

222051 - Pork Ham Bone In Select S/O



# Nutrition Facts

Servings per Container  
Serving size

Amount per serving  
**Calories**

	% Daily Value*
<b>Total Fat</b>	<b>%</b>
Saturated Fat	%
Trans Fat	
<b>Cholesterol</b>	<b>%</b>
<b>Sodium</b>	<b>%</b>
<b>Total Carbohydrate</b>	<b>%</b>
Dietary Fiber	%
Total Sugars	
Includes Added Sugar	%
<b>Protein</b>	
Vitamin D	%
Calcium	%
Iron	%
Potassium	%

\* The % Daily Value (DV) tells you how much a nutrient in a serving of food contributes to a daily diet. 2,000 calories a day is used for general nutrition advice.

## \* Benefits

Ingredients

⚠ Allergens

## Handling Suggestions

## 📄 Product Specifications

## Serving Suggestions

## Prep & Cooking Suggestions

Brand	Manufacturer	Product Category
SEABOARD FARMS	SEABOARD FOODS	Fish, Commodity

MFG #	SPC #	GTIN	Pack	Pack Desc.
12426	222051	1111111111111		2/22# AVG

Gross Weight	Net Weight	Country of Origin	Kosher	Child Nutrition
46lb	44lb		No	No

Shipping Information						
Length	Width	Height	Volume	TlxHl	Shelf Life	Storage Temp From/To
8.5in	12.9in	23.8in	1.51cf	1x1	180days	0 / 32



SEABOARD FARMS

222051 - Pork Ham Bone In Select S/O



### Nutrition Analysis

Calories		Total Fat		Sodium	
Protein		Trans Fats		Calcium	
Total Carbohydrates...		Saturated Fat		Iron	
Sugars		Added Sugars		Potassium	
Dietary Fiber		Polyunsaturated Fat		Zinc	
Lactose		Monounsaturated Fat		Phosphorus	
Sucrose		Cholesterol			
Vitamin A(U)		Vitamin D		Thiamin	
Vitamin A(RE)		Vitamin E		Niacin	
Vitamin C		Folate		Riboflavin	
Magnesium		Vitamin B-6		Vitamin B-12	
Monosodium		Sulphites		Nitrates	

### Additional Images

