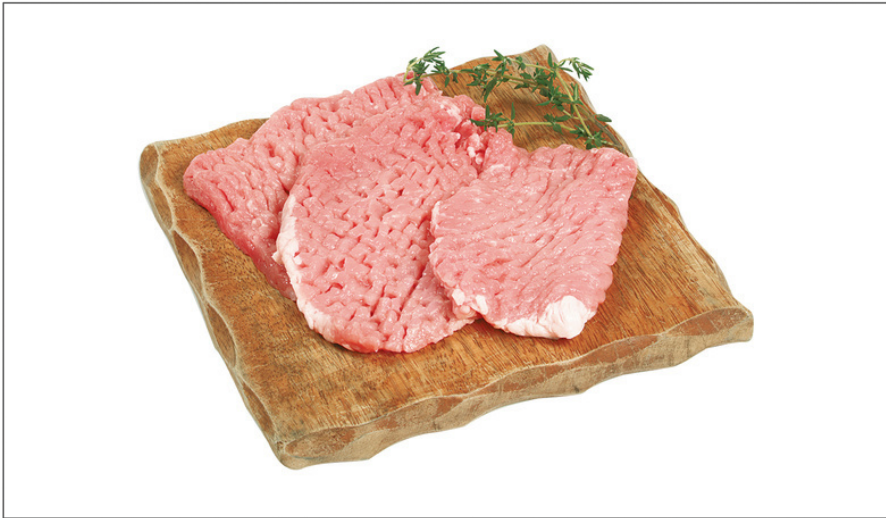




MILL STREET  
222332 - **Pork Cubed Cutlet 2 X Bulk**



\* Benefits

## Nutrition Facts

Servings per Container  
Serving size

Amount per serving  
**Calories**

	% Daily Value*
<b>Total Fat</b>	<b>%</b>
Saturated Fat	%
Trans Fat	
<b>Cholesterol</b>	<b>%</b>
<b>Sodium</b>	<b>%</b>
<b>Total Carbohydrate</b>	<b>%</b>
Dietary Fiber	%
Total Sugars	
Includes Added Sugar	%
<b>Protein</b>	
Vitamin D	%
Calcium	%
Iron	%
Potassium	%

\* The % Daily Value (DV) tells you how much a nutrient in a serving of food contributes to a daily diet. 2,000 calories a day is used for general nutrition advice.

Ingredients

⚠ Allergens

Handling Suggestions

📄 Product Specifications

Serving Suggestions

Prep & Cooking Suggestions

Brand	Manufacturer	Product Category
MILL STREET	KFS	Fish, Commodity

MFG #	SPC #	GTIN	Pack	Pack Desc.
6340006	222332	1111111111111		28/6 OZ

Gross Weight	Net Weight	Country of Origin	Kosher	Child Nutrition
10.75lb	10.5lb			

Shipping Information						
Length	Width	Height	Volume	TlxHl	Shelf Life	Storage Temp From/To
16in	10in	4in	0.37cf	2x2	28days	33 / 39



Nutrition Analysis

Calories		Total Fat		Sodium	
Protein		Trans Fats		Calcium	
Total Carbohydrates...		Saturated Fat		Iron	
Sugars		Added Sugars		Potassium	
Dietary Fiber		Polyunsaturated Fat		Zinc	
Lactose		Monounsaturated Fat		Phosphorus	
Sucrose		Cholesterol			
Vitamin A(U)		Vitamin D		Thiamin	
Vitamin A(RE)		Vitamin E		Niacin	
Vitamin C		Folate		Riboflavin	
Magnesium		Vitamin B-6		Vitamin B-12	
Monosodium		Sulphites		Nitrates	

 Additional Images

