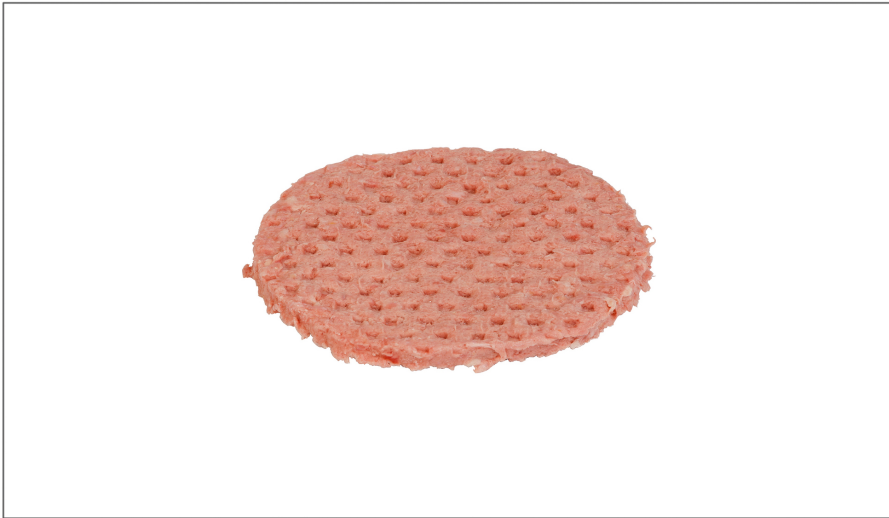




HOLTEN

232536 - Beef Patty Claim To Fame 6 1

Lightly preseasoned to enhance the natural beef flavor, and for uniform taste throughout. Quick-cooking patties, wider bun-coverage. Great pattie for cheeseburgers, ideal for layering. Made with high quality ingredients. Clean label, few ingredients. Contains no MSG, or TVP, soy, or other fillers! Gluten free! Individually Quick Frozen for ease of handling, product safety, and product freshness. Easy to cook goes straight from freezer to grill. Performs well under multiple cooking methods. Great for a chain-broiler. Perfect for hotels, buffets, catering, commercial restaurants, theme parks, and wherever fine quality is required. High quality means customers will pay more! Great taste builds customer loyalty. Exact portioning controls costs. Processed under HACCP procedures and USDA regulations to ensure food safety. SQF Food Safety and Quality Codes Certified!



* Benefits

Nutrition Facts

Servings per Container	1
Serving size	100g
Amount per serving	
Calories	237
<i>% Daily Value*</i>	
Total Fat 18.9g	29%
Saturated Fat 8.1g	41%
<i>Trans Fat</i> 1.2g	
Cholesterol 58mg	19%
Sodium 222mg	10%
Total Carbohydrate 0g	0%
Dietary Fiber 0g	0%
Total Sugars 0g	
Includes 0g Added Sugar	0%
Protein 16.7g	
Vitamin D 0mcg	0%
Calcium 10.1mg	1%
Iron 1.8mg	10%
Potassium 252mg	5%

* The % Daily Value (DV) tells you how much a nutrient in a serving of food contributes to a daily diet. 2,000 calories a day is used for general nutrition advice.

Ingredients

Ingredients: Beef, water, spice, salt

Allergens

Free From:

- crustaceans
- mollusks
- eggs
- fish
- milk
- peanuts
- sesame
- soy
- tree nuts
- wheat

Handling Suggestions

Product should be stored between -10 and 10 degrees F

Serving Suggestions

On a bun in a basket with curly fries for a quick lunch entree. On a bun with sides of coleslaw, French fries, and a pickle for lunch or supper. Without a bun on a plate with salad and fruit, or wrapped in a tortilla or lettuce, for a lighter entree. Layered for cheeseburgers. On a toasted onion roll topped with BBQ sauce, bacon, and onions. Topped with a slice of cheddar cheese and sauted portabella mushrooms. Topped with bacon strips and a melted slice of American cheese. Topped with melted slices of American cheese, Swiss cheese, and cheddar cheese. Topped with a slice of Swiss cheese and sauted mushrooms & onions. On a sourdough bun topped with a slice of Monterey Jack cheese, sauted mushrooms & onions, and bacon.

Prep & Cooking Suggestions

Cook patties from frozen state for best results. Grill: Place on a preheated (350F) grill and cook until juices begin to pool. Turn pattie and continue cooking until juices run clear. Always cook ground beef products to an internal temperature of 160F.

Product Specifications

Brand	Manufacturer	Product Category
HOLTEN	BRANDING IRON/HOLTEN	Freezer, Deli & Plastic Food Storage Bags

MFG #	SPC #	GTIN	Pack	Pack Desc.
32064	232536	00079821320642	60	60/EA

Gross Weight	Net Weight	Country of Origin	Kosher	Child Nutrition
10.81lb	10lb	USA		No

Shipping Information						
Length	Width	Height	Volume	TlxHI	Shelf Life	Storage Temp From/To
15.13in	10.09in	4.12in	0.36ft3	10x6	180DAYS	0°F / 32°F



HOLTEN

232536 - Beef Patty Claim To Fame 6 1

Lightly preseasoned to enhance the natural beef flavor, and for uniform taste throughout. Quick-cooking patties, wider bun-coverage. Great pattie for cheeseburgers, ideal for layering. Made with high quality ingredients. Clean label, few ingredients. Contains no MSG, or TVP, soy, or other fillers! Gluten free! Individually Quick Frozen for ease of handling, product safety, and product freshness. Easy to cook goes straight from freezer to grill. Performs well under multiple cooking methods. Great for a chain-broiler. Perfect for hotels, buffets, catering, commercial restaurants, theme parks, and wherever fine quality is required. High quality means customers will pay more! Great taste builds customer loyalty. Exact portioning controls costs. Processed under HACCP procedures and USDA regulations to ensure food safety. SQF Food Safety and Quality Codes Certified!



Nutrition Analysis - By Serving

Calories	237	Total Fat	18.9g	Sodium	222mg
Protein	16.7	Trans Fats	1.2g	Calcium	10.1mg
Total Carbohydrates...	0g	Saturated Fat	8.1g	Iron	1.8mg
Sugars	0g	Added Sugars	0g	Potassium	252mg
Dietary Fiber	0g	Polyunsaturated Fat		Zinc	
Lactose		Monounsaturated Fat		Phosphorus	
Sucrose		Cholesterol	58mg		
Vitamin A(IU)	14	Vitamin D	0mcg	Thiamin	
Vitamin A(RE)		Vitamin E		Niacin	
Vitamin C	0mg	Folate		Riboflavin	
Magnesium		Vitamin B-6		Vitamin B-12	
Monosodium		Sulphites		Nitrates	

Additional Images

