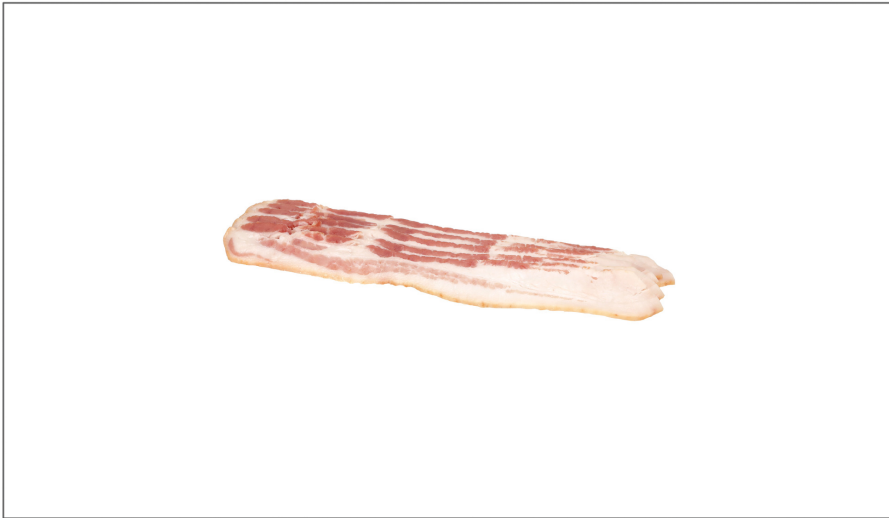




FARMLAND

# 239476 - Bacon Apple Cider Layout Fresh 14 18 S/O

All Smithfield brands are driven by the love of meat ours, yours and, of course, your customers. That's why our offerings are so vast; because we all need our pork and specialty prepared meats our way no one offers more. Smithfield Culinary offers everything you need to build your menu, from innovative culinary insights and ideas that help create head-turning menu ideas. Equally important - Smithfield has set sustainability goals because we believe we can build a more sustainable business and contribute to a better future.



### \* Benefits

Great source of protein.

## Nutrition Facts

Servings per Container  
Serving size **2SLICES (19g)**

Amount per serving  
**Calories 70**

|                               | % Daily Value* |
|-------------------------------|----------------|
| <b>Total Fat</b> 6g           | <b>9%</b>      |
| Saturated Fat 2g              | <b>10%</b>     |
| Trans Fat 0g                  |                |
| <b>Cholesterol</b> 10mg       | <b>3%</b>      |
| <b>Sodium</b> 250mg           | <b>11%</b>     |
| <b>Total Carbohydrate</b> 50g | <b>18%</b>     |
| Dietary Fiber 0g              | <b>0%</b>      |
| Total Sugars 1g               |                |
| Includes Added Sugar          | <b>%</b>       |
| <b>Protein</b> 3g             |                |
| Vitamin D                     | <b>%</b>       |
| Calcium 0mg                   | <b>0%</b>      |
| Iron 0mg                      | <b>0%</b>      |
| Potassium                     | <b>%</b>       |

\* The % Daily Value (DV) tells you how much a nutrient in a serving of food contributes to a daily diet. 2,000 calories a day is used for general nutrition advice.

### Ingredients

### ⚠ Allergens

#### Free From:

- crustaceans
- eggs
- fish
- milk
- peanuts
- sesame
- soy
- tree nuts
- wheat

### Handling Suggestions

Store and use per package instructions.

### Serving Suggestions

Serve as desired.

### Prep & Cooking Suggestions

Prepare per package instructions.

### 📄 Product Specifications

| Brand    | Manufacturer        | Product Category |
|----------|---------------------|------------------|
| FARMLAND | SMITHFIELD/FARMLAND | Pork             |

| MFG # | SPC #  | GTIN           | Pack | Pack Desc. |
|-------|--------|----------------|------|------------|
| 17186 | 239476 | 00070247171863 | 1    | 1/15#      |

| Gross Weight | Net Weight | Country of Origin | Kosher | Child Nutrition |
|--------------|------------|-------------------|--------|-----------------|
| 16.56lb      | 15lb       | USA               |        | No              |

| Shipping Information |         |        |         |       |            |                      |
|----------------------|---------|--------|---------|-------|------------|----------------------|
| Length               | Width   | Height | Volume  | TlxHI | Shelf Life | Storage Temp From/To |
| 18.38in              | 11.38in | 4.75in | 0.58ft3 | 8x12  | 75DAYS     | 33°F / 39°F          |



**FARMLAND**

# 239476 - Bacon Apple Cider Layout Fresh 14 18 S/O

All Smithfield brands are driven by the love of meat ours, yours and, of course, your customers. That's why our offerings are so vast; because we all need our pork and specialty prepared meats our way no one offers more. Smithfield Culinary offers everything you need to build your menu, from innovative culinary insights and ideas that help create head-turning menu ideas. Equally important - Smithfield has set sustainability goals because we believe we can build a more sustainable business and contribute to a better future.



## Nutrition Analysis - By Serving

|                        |     |                     |      |              |       |
|------------------------|-----|---------------------|------|--------------|-------|
| Calories               | 70  | Total Fat           | 6g   | Sodium       | 250mg |
| Protein                | 3   | Trans Fats          | 0g   | Calcium      | 0mg   |
| Total Carbohydrates... | 50g | Saturated Fat       | 2g   | Iron         | 0mg   |
| Sugars                 | 1g  | Added Sugars        |      | Potassium    |       |
| Dietary Fiber          | 0g  | Polyunsaturated Fat |      | Zinc         |       |
| Lactose                |     | Monounsaturated Fat |      | Phosphorus   |       |
| Sucrose                |     | Cholesterol         | 10mg |              |       |
| Vitamin A(U)           | 0   | Vitamin D           |      | Thiamin      |       |
| Vitamin A(RE)          |     | Vitamin E           |      | Niacin       |       |
| Vitamin C              | 0mg | Folate              |      | Riboflavin   |       |
| Magnesium              |     | Vitamin B-6         |      | Vitamin B-12 |       |
| Monosodium             |     | Sulphites           |      | Nitrates     |       |

## Additional Images

