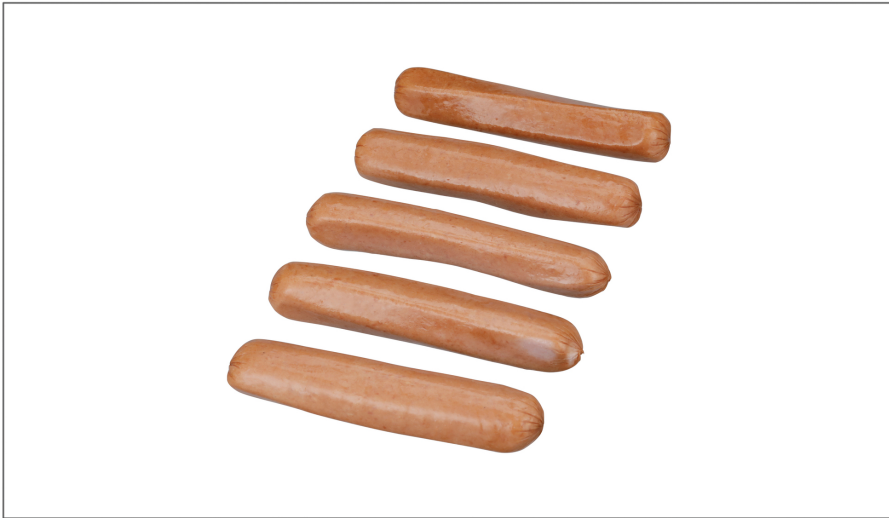




FARMLAND

# 499063 - Sausage Polish Kielbasa 4 1 6 Inch

All Smithfield brands are driven by the love of meat, ours, yours and, of course, your customers. That's why our offerings are so vast; because we all need our pork and specialty prepared meats our way, no one offers more. Smithfield Culinary offers everything you need to build your menu, from innovative culinary insights and ideas that help create head turning menu ideas. Smithfield has set sustainability goals because we believe we can build a more sustainable business and contribute to a better future.



### \* Benefits

Quality and consistency are in our DNA, and our smoked sausages are no exception. Tender Pork and Beef Smoked Sausages use only tender, USDA-inspected cuts of pork and beef to deliver a rich bite and even texture every time.

### Ingredients

PORK, WATER, CONTAINS 2% OR LESS OF: SALT, SUGAR, FLAVORINGS, SODIUM PHOSPHATES, BEEF, SODIUM ERYTHORBATE, SODIUM NITRITE.

### ⚠ Allergens

#### Free From:

- crustaceans
- eggs
- fish
- milk
- peanuts
- sesame
- soy
- tree nuts
- wheat

## Nutrition Facts

40 Servings Per Container

Serving size **1Link (112g)**

Amount per serving  
**Calories 370**

% Daily Value\*

<b>Total Fat</b> 34 g	<b>52%</b>
Saturated Fat 12 g	<b>60%</b>
Trans Fat 0 g	
<b>Cholesterol</b> 65 mg	<b>22%</b>
<b>Sodium</b> 1110 mg	<b>48%</b>
<b>Total Carbohydrate</b> 3 g	<b>1%</b>
Dietary Fiber 0 g	<b>0%</b>
Total Sugars 2 g	
Includes 2 g Added Sugar	<b>4%</b>
<b>Protein</b> 12 g	
Vitamin D 60.29 mcg	<b>301%</b>
Calcium 21.52 mg	<b>2%</b>
Iron 0.89 mg	<b>5%</b>
Potassium 210 mg	<b>4%</b>

\* The % Daily Value (DV) tells you how much a nutrient in a serving of food contributes to a daily diet. 2,000 calories a day is used for general nutrition advice.

### Handling Suggestions

Store and use per package instructions

### Serving Suggestions

Operators serve in a bun when on the run or at dinner along side of roasted potatoes and broccoli or at breakfast with eggs and hash browns.

### Prep & Cooking Suggestions

Skillet: Place sausage in skillet over medium-high heat. Cook 5 to 7 minutes, turning frequently to brown evenly.

### 📄 Product Specifications

Brand	Manufacturer
FARMLAND	SMITHFIELD FOODS INC.

MFG #	SPC #	GTIN	Pack	Pack Desc.
00070247135285	499063	00070247135285	2	2 / 1 / 5.0 LBR

Gross Weight	Net Weight	Country of Origin	Kosher	Child Nutrition
10.47 lb	10 lb	USA		No

Shipping Information						
Length	Width	Height	Volume	TlxHl	Shelf Life	Storage Temp From/To
10.63 in	7.63 in	6.44 in	0.3 ft3	22x9	365 DAYS	-10 °F / 0 °F



FARMLAND

# 499063 - Sausage Polish Kielbasa 4 1 6 Inch

All Smithfield brands are driven by the love of meat, ours, yours and, of course, your customers. That's why our offerings are so vast; because we all need our pork and specialty prepared meats our way, no one offers more. Smithfield Culinary offers everything you need to build your menu, from innovative culinary insights and ideas that help create head turning menu ideas. Smithfield has set sustainability goals because we believe we can build a more sustainable business and contribute to a better future.



## Nutrition Analysis - By Serving

Calories	370	Total Fat	34 g	Sodium	1110 mg
Protein	12	Trans Fats	0 g	Calcium	21.52 mg
Total Carbohydrates...	3 g	Saturated Fat	12 g	Iron	0.89 mg
Sugars	2 g	Added Sugars	2 g	Potassium	210 mg
Dietary Fiber	0 g	Polyunsaturated Fat	6 g	Zinc	
Lactose		Monounsaturated Fat	15 g	Phosphorus	
Sucrose		Cholesterol	65 mg		
Vitamin A(U)		Vitamin D	60.29 mcg	Thiamin	
Vitamin A(RE)		Vitamin E		Niacin	
Vitamin C		Folate		Riboflavin	
Magnesium		Vitamin B-6		Vitamin B-12	
Monosodium		Sulphites		Nitrates	

### Additional Images

